

CARGA MAX. MAX. S.W.L CARICO MASSIMO	2500 kg					4000 kg					
Pluma (m) Jib Braccio	23.6	30	35.5	41	46	23.6	30	35.5	41	46	
Campo de carga max de 2,1m. a Max swl range from 2,1m. to Campo di carico Massimo da 2,1m. a	23.6	26.5	25.7	23.8	20.6	15.6	15.4	15.2	14.5	12.8	
Alcance Radius Sbraccio (m)	12	2500	2500	2500	2500	2500	4000	4000	4000	4000	4000
	13.5	2500	2500	2500	2500	2500	4000	4000	4000	4000	3500
	15	2500	2500	2500	2500	2500	4000	4000	4000	3760	2970
	18	2500	2500	2500	2500	2500	3800	3240	3150	3060	2580
	21	2500	2500	2500	2500	2460	3180	2750	2760	2670	2270
	23.6	2500	2500	2500	2500	2110	2650	2550	2460	2370	2030
	27		2500	2370	2180	1840		2260	2170	2030	1750
	30.0		2100	2110	1930	1630		2000	1890	1800	1550
	33			1890	1730	1560			1690	1580	1360
	35.5			1700	1560	1420			1550	1450	1220
	39				1420	1300				1250	1050
	41.0				1300	1200				1150	980
	43					1100					920
46.0					1000					850	

MECANISMOS MECHANISMS / MECCANISMI		
	Vel. m/min Speed	Pot. W Power
	0.3 0.6 rpm 0.9	4.0 kw
	28 / 56 m/min	1 / 1.8 kw
	20 m/min	2x2.2 Kw

CARGA / VELOCIDAD (kg/m/min) LOAD / SPEED · CARICO / VELOCITA'

Potencia / Power / Potenza	15 Hp (11 Kw) - 2.5 t	* 25 Hp (18.5 Kw) - 4.0 t	
	1ª	2500 kg – 8 m/min	2500 kg – 8 m/min
	2ª	2500 kg – 29 m/min	2500 kg – 31 m/min
	3ª	1000 kg – 58 m/min	1500 kg – 62 m/min
	1ª	4000 kg – 4 m/min	4000 kg – 4 m/min
	2ª	4000 kg – 15 m/min	4000 kg – 16 m/min
	3ª	2500 kg – 30 m/min	2600 kg – 32 m/min

ALCANCE RADIUS / SBRACCIO	46 m			41 m			35.5 m			30 m			23.6 m		
CONTRAPESO COUNTERWEIGHT CONTRAPPESO	A	B	C	A	B	C	A	B	C	A	B	C	A	B	C
	4	-	1	3	1	-	3	-	1	3	-	-	2	-	1
	10050 kg			8300 kg			7750 kg			6900 kg			5450 kg		

LASTRE DE LA BASE / BASE BALLAST BLOCKS / ZAVORRA ALLA BASE

	CON BASE ON CROSSBASE	24.9 m	28.9 m	36.7 m	40.7 m	50.9 m
	3.2x3.2m	45.6 t	53 t	53 t	-	-
	3.8x3.8m	45.6 t	53 t	53 t	60.8 t	-
	4.5x4.5m	45.6 t	53 t	53 t	60.8 t	72.8 t

PESO DE CONSTRUCCIÓN APROXIMADO

DEAD WEIGHT APPROX. / PESO DI COSTRUZIONE APPROSSIMATO

20 440 kg

POTENCIA REQUERIDA Y CONDUCTORES
REQUIERED POWER AND CONDUCTORS
POTENZA ELETTRICA NECESSARIA E
CONDUTTORI

CON ELEVACIÓN 18.5 Kw
18.5 Kw HOISTING
CON SOLLEVAMENTO 18.5 Kw

CON ELEVACIÓN 11.5 Kw
11.5 Kw HOISTING
CON SOLLEVAMENTO 11.5 Kw

31 KVA - 400 V - 50Hz

20 KVA - 400 V - 50 Hz

25 m

50 m

100 m

25 m

50 m

100 m

4x25mm²

4x25mm²

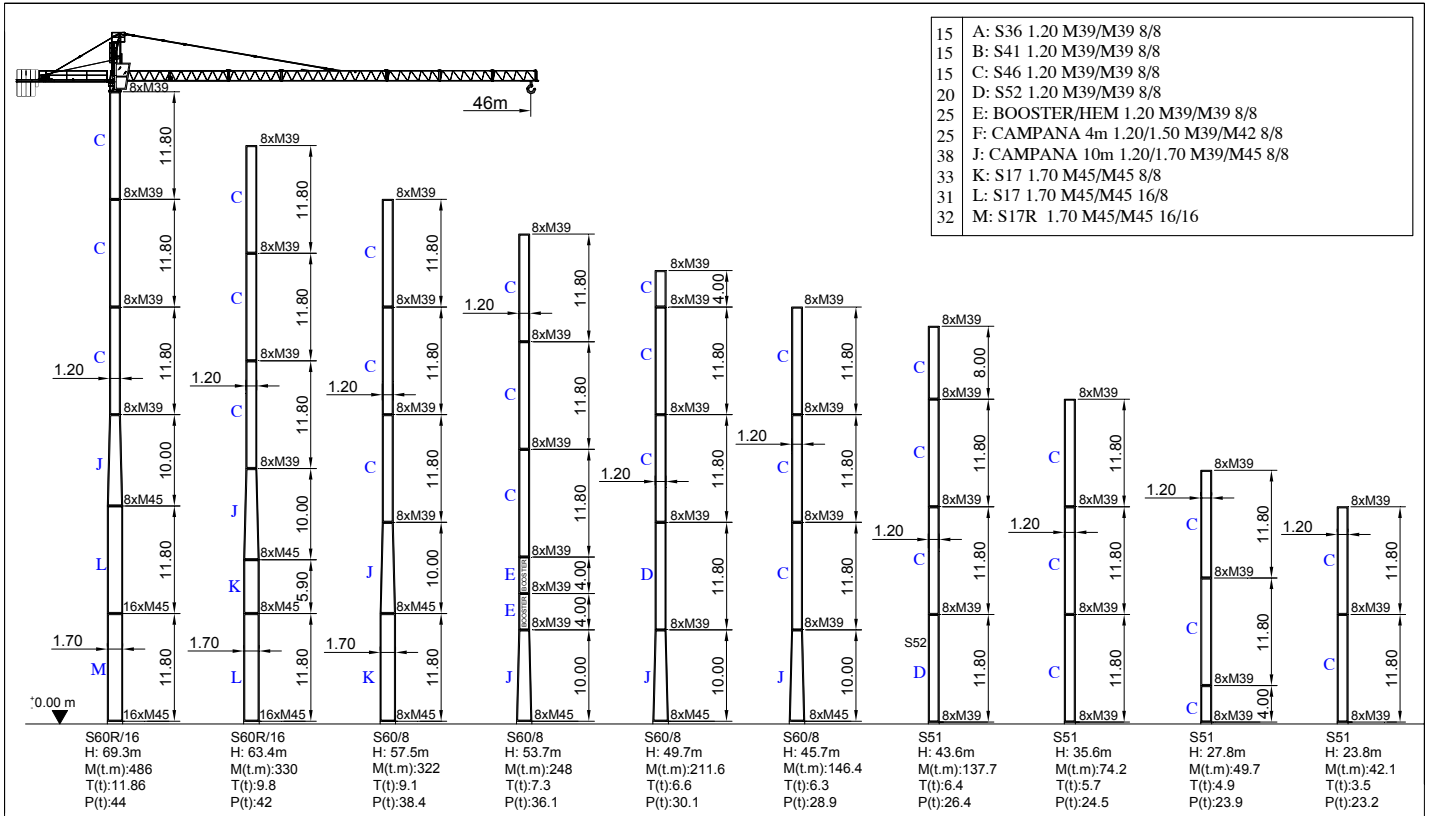
4x25mm²

4x16mm²

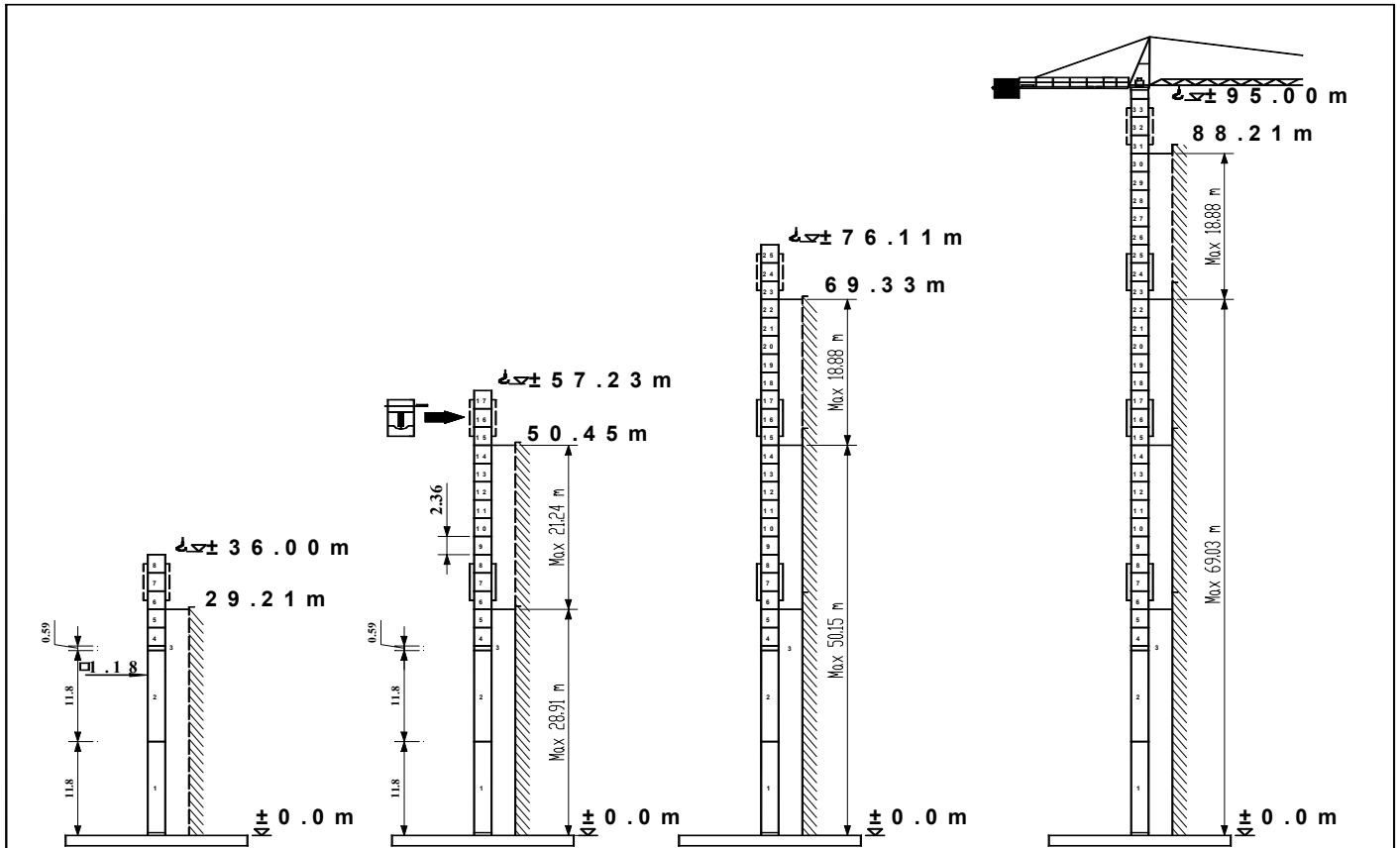
4x16mm²

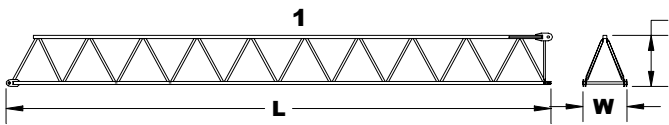
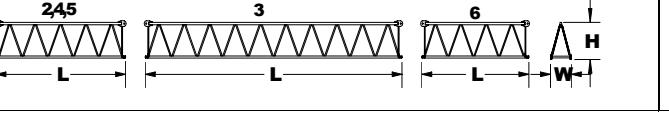
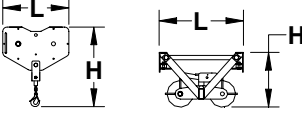
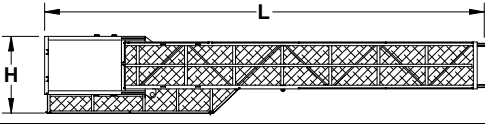
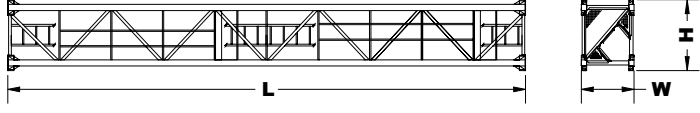
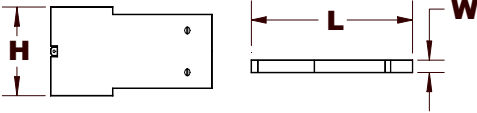
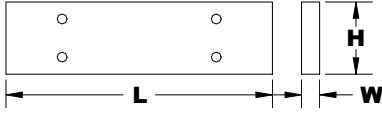
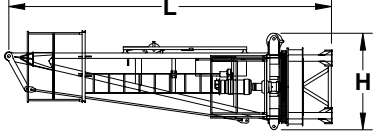
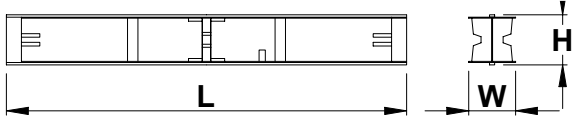
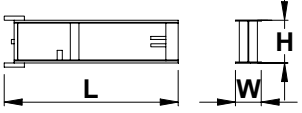
4x25mm²

COMPOSICIÓN DE TORRE / TOWER COMPOSITION / STRUTTURA DELLA TORRE



MONTAJE HIDRÁULICO / HYDRAULIC ASSEMBLY / MONTAGGIO IDRAULICO



PESO Y DIMENSIONES DE LOS ELEMENTOS DE LA GRÚA WEIGHT AND DIMENSIONS OF THE CRANE / PESO E DIMENSIONI DEI ELEMENTI DELLA GRU		L (m)	W (m)	H (m)	Peso (kg)	
ELEMENTO DE PLUMA Nº1 JIB HEEL SECTION ELEMENTO DI BRACCIO Nº1		11.85	1.04	1.30	1125	
ELEMENTO INTERMEDIO DE PLUMA INTERMEDIATE JIB SECTION ELEMENTO INTERMEZZO DI BRACCIO		2 3 4 5 6	5.94 11.74 5.94 5.94 5.14	0.95 0.95 0.95 0.95 0.95	1.22 1.32 1.22 1.22 1.22	450 975 330 310 240
GANCHO Y CARRO HOOK AND TROLLEY GANCIO E CARRELLO		0.75 0.96	0.12 1.10	1.40 0.62	90 110	
CONTRAPLUMA COUNTER JIB CONTROBRACCIO		9.28	0.22	1.64	1050	
ELEMENTO DE TORRE TOWER SECTION ELEMENTO DI TORRE		11.8 4.0	1.2 1.2	1.38 1.38	3000 1100	
BLOQUE DE CONTRAPESO COUNTERWEIGHT BLOCKS BLOCCO DI CONTRAPPESO		A B C	2.94 2.94 1.70	0.30 0.18 0.18	1.25 1.25 1.25	2300 1400 850
BLOQUE DE LASTRE DE LA BASE BASE BALLAST BLOCK BLOCCO DI ZAVORRA ALLA BASE		4.4	1.2	0.3	3800	
CABEZA DE TORRE TOWER HEAD TESTA DI TORRE		6.5	1.8	1.7	2990	
VIGA PRINCIPAL DE LA BASE MAIN BASE BEAM TRAVE PRINCIPALE DELLA BASE		5.72	0.67	0.65	1560	
SEMIVIGA SECUNDARIA DE LA BASE HALF BASE BEAM SEMITRAVE SECONDARIA DELLA BASE		2.77	0.45	0.665	1500	

Sujeto a modificaciones / Subject to modifications! / Si fa riserva di modifiche!

Declinamos toda responsabilidad derivada de la informacion proporcionada

This information is supplied without liability / Le indicazioni contenute si intendono salvo errori ed omissioni

SISTEMAS FORZA S.L. Ctra. de Beniaján, Km. 5 - Beniaján MURCIA (España)

Tfno.: (+34) 968 82 08 62 / 66 • Fax: (+34) 968 82 48 57

www.forzasl.com / forza@forzasl.com